

Snyder BCCP Lite New User Preferences Setup

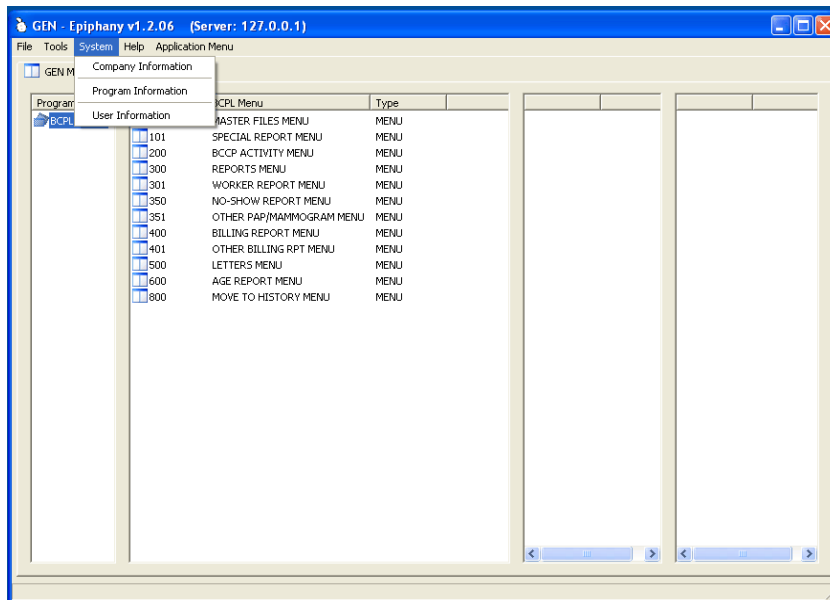
After BCCP Lite is installed on your computer, the next step is to enter the user settings.

Double Click on the Snyder BCCP Lite desktop icon to open the program.

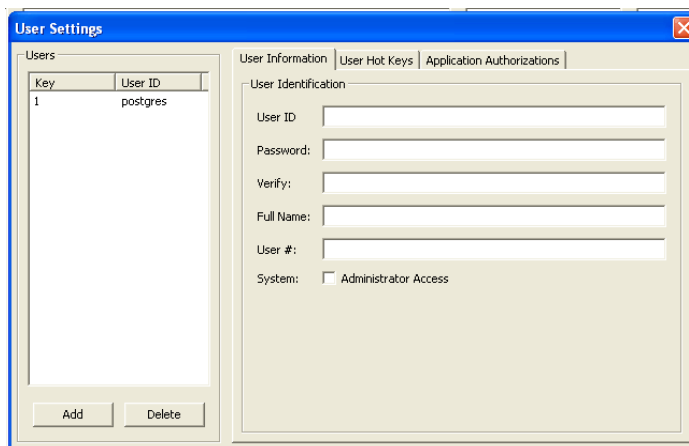


A default user name will display “postgres”. Type in the default password **Solution5526** to log in.

Click on System and then User Information.



There will be one default “user” listed in the User’s column. To add your name as a user, click on <Add>.



Enter your **User ID**. The user ID must have no spaces in it. There is a limit of 25 characters.

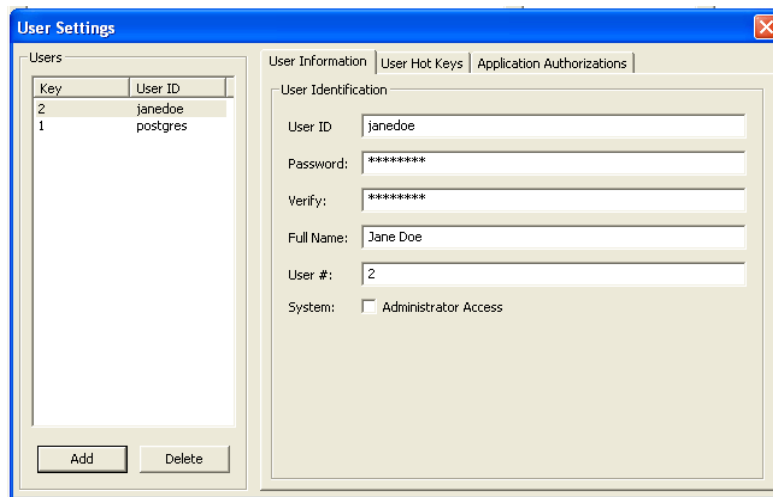
Then enter your **password**. The password may contain letters, numbers, special characters and spaces.

In the “Verify” line, enter your chosen password again.

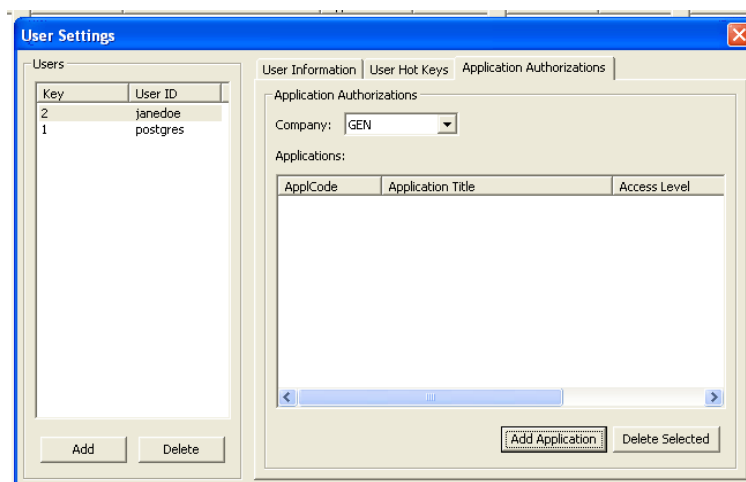
The next line asks for you to enter your “Full Name.” There are 50 characters available for this.

The user number would be the next available number. In the example shown below, the default user is already listed and is assigned the number 1. The next user entered, therefore, would be User #2.

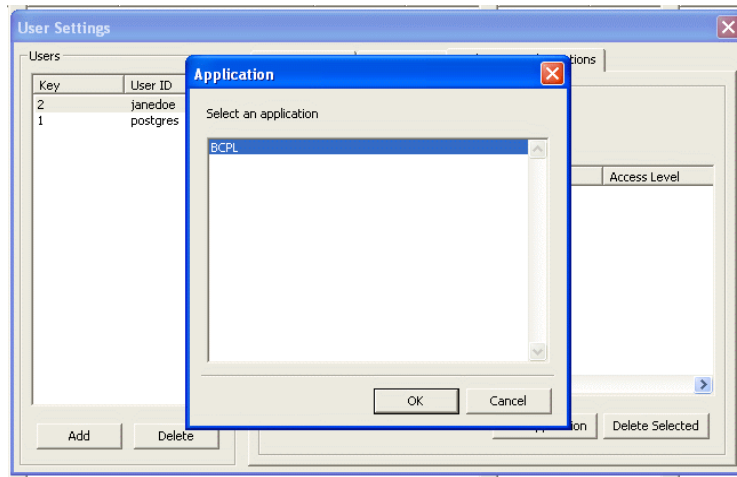
If this user is to be able to run backups or add other users, click on the box in front of “Administrator Access” to set the user to have Administrator Access. A checkmark will show that the user has Administrator Access.



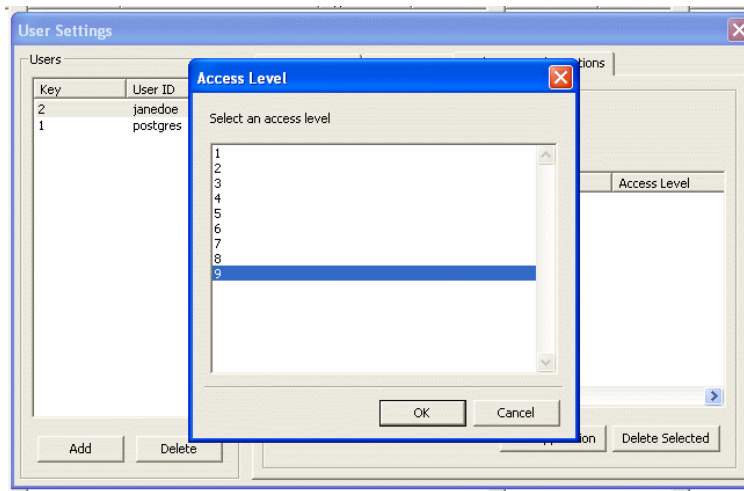
After the User Information has been entered, click on the Application Authorizations tab. Click on <Add Application>.



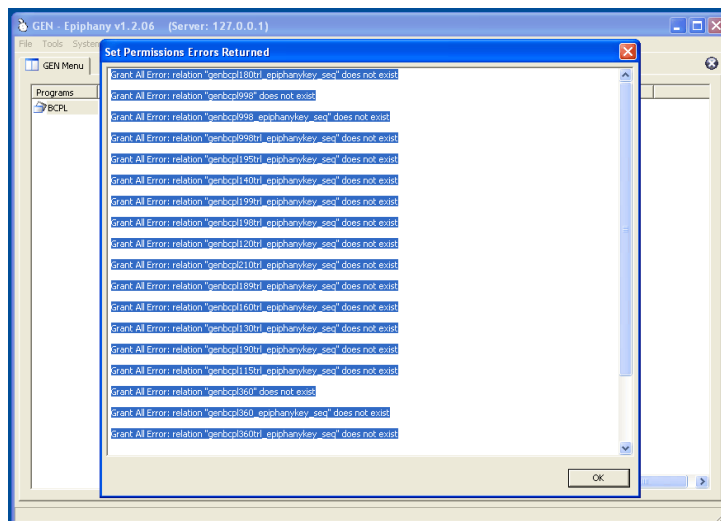
Select the application to add. For this install, BCPL will be the only application available. Click on BCPL to highlight it, and then click on <OK> .



You will now be prompted to select an access level for this user. Set the level at 9 and then click <OK> to set.



Ignore any errors that may be returned after setting this access level. Simply click on <OK> to continue.



Now, exit the program and log back in using the User Name and Password that you created.

